



# DK SPEC

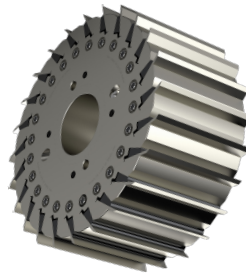
## NG PLANER HEADS <sup>NG2 & NG4</sup> FILEX MK2 <sup>NX</sup>

High performance integrated solution

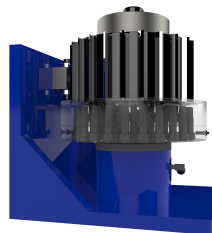
### PERFORMANCE

- Designed for flat or corrugated knives
- Mechanically locked at 100%
- Quick and easy setup
- More knives per head
- 9" CC = 20 knives
- 14" CC = 34 knives
- 16" CC = 40 knives
- 17 1/8" CC = 44 knives
- Engineered to grind knives on the Filex MK2<sup>NX</sup>
- Designed for high speed planers
- Compatible with hydro lock cylindrical bore
- Multiple eased edge profiles
- Better board surface finish
- Longer intervals between jointing procedures
- Less knives consumption
- Integrated solution

### SAFETY

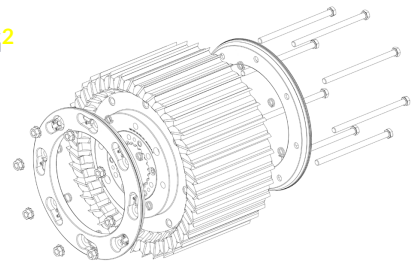


### SETUP STAND <sup>NG4</sup>



### VERSATILITY

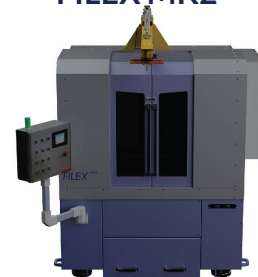
#### NG<sup>2</sup>



#### NG<sup>4</sup>



### FILEX MK2 <sup>NX</sup>



1060, chemin Olivier  
Lévis (Québec) G7A 2M8

Distributed by :

**WOLFTÉK**

1.888.686.3847  
www.dkspec.com

## REFERENCES

LAMPE MALPHUS 1

J.D. IRVING ST-LEONARD

CANFOR RADIUM

CANFOR GRANDE-PRAIRIE

J.D. IRVING CHIPMAN

CANFOR ELKO

WEST FRASER HINTON

WEST FRASER BLUE RIDGE

WEST FRASER EDSON

TOLKO ARMSTRONG

BOIS LEMELIN ST-AUBERT

WEST FRASER WILLIAMS LAKE

CARRIER BEGIN

HARRY FREEMAN

LAMPE MALPHRUS 2

EACOM VAL-D'OR

CARRIER LUMBER

RESOLUTE FOREST PRODUCTS ATIKOKAN 1

RESOLUTE FOREST PRODUCTS ATIKOKAN 2

WEST FRASER HIGH PRAIRIE

RESOLUTE FOREST PRODUCTS LATUQUE

BEADLE & BALFOUR (CANFOR)

DUNKLEY LUMBER

GDS VALORIBOIS

WEST FRASER CHETWYND

CRÊTE ST-FAUSTIN

RESOLUTE FOREST PRODUCTS LADORÉ 1

EACOM ELK LAKE

HARRY FREEMAN

ARBEC L'ACENCION

MATÉRIAUX BLANCHET AMOS

ANGELINA FOREST PRODUCTS

LAVERN HEIDEMAN

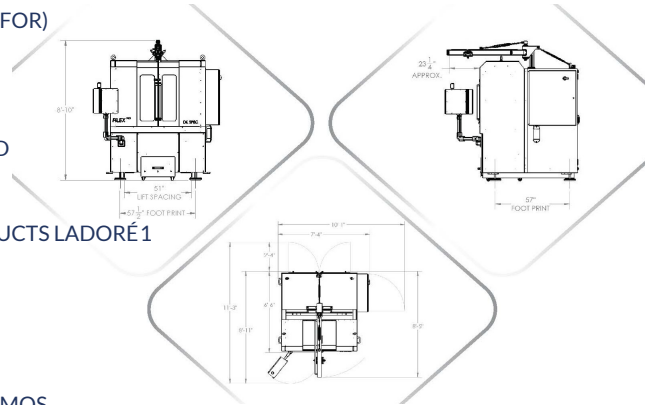
J.D. IRVING DIXFIELD

RESOLUTE FOREST PRODUCTS LADORÉ 2

BARRETTE STRUCTURAL

MATÉRIAUX BLANCHET ST-PAMPHILE

WEST FRASER MANSFIELD



# DK SPEC

INNOVATIVE TECHNOLOGY & DESIGN