

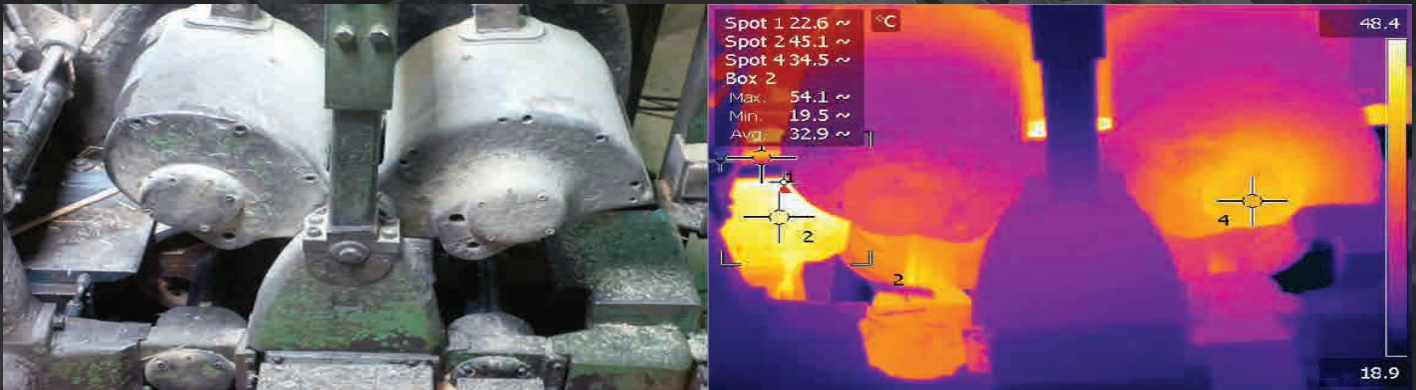
Thermal Monitoring System

by Wolftek

Beat The Heat

Wolftek's Thermal Monitoring System real time temperature information which visually sees the sources of heat.

This information improves safety while reducing mechanical wear, maintenance and downtime.



WOLFTEK

wolftek.ca | 1-800-991-4399

Design Features and Benefits

Monitoring & Integration

- Offers a thermal measurement range from -20° to 350° Celcius.
- With as many as 10 alarm zones per camera more of your equipment is covered.
- ControlLogix integration allows the system to be monitored in real time along with full industrial interlocking for 24/7 capability.
- Records historical parameter changes and alarms for referencing and investigating.

Benefits

- Maintenance can be better managed by fixing issues before they arise - reducing your downtime by eliminating troubleshooting and expediting ordered parts.
- You can actually see hot spots - monitoring known hot spots and finding new ones improves safety by preventing dust from collecting and by indicating where more cooling is needed.

Wolftek TMS VS Others

Unlike other systems, such as RTD or thermocouplers, Wolftek's Thermal Monitoring System gives information in real time while providing historical information as well. With the camera's large field of view and multiple alarm zones we have been able to track more thermal information and make it more practical for comparison and monitoring.

Call or visit Wolftek's website today for information and to see how this system can benefit your company.



wolftek.ca | 1-800-991-4399